

Acura® self-refill self-refilling microdispenser pipette

Hand-held, self-refilling microdispenser intended for repeat distribution of microliter volumes. Carefully selected materials ensure durability and resistance to aggressive media. Instrument combines easy handling of a regular micropipette with flexibility of a repeater pipette. There is no need for plastic tips or consumables, which may represent substantial savings. Three-year warranty.

The Acura® self-refill 865

Product advantages

- Excellent ergonomics, soft plunger activation
- Large volume display
- *Swift-set* user calibration system*
- No need for consumables
- Autoclavable fully assembled at 121°C / 250°F
- Versatile feeding through bottle, tubing or syringe

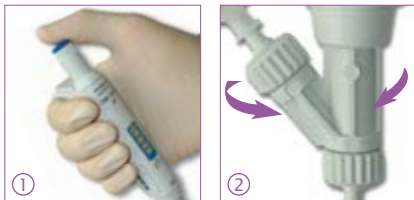
* Socorex patented

865
5 - 50 µL
20 - 200 µL
100 - 1000 µL



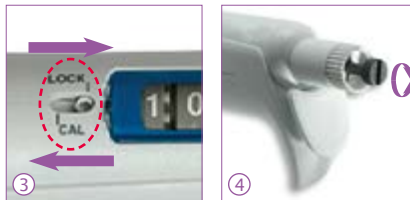
Excellent ergonomics ①

Instrument shape and lightweight offer most convenient pipetting comfort. Smooth plunger activation drastically reduces hand fatigue.



Convenient dispensing ①

Reliable valve system ensures high performance dispensing, dose after dose. It revolves to allow selection of the best working position.



Swift-set calibration system* ③ ④

Easy and precise system with integrated key and locking mechanism, making tedious procedures a thing of the past.

* Socorex patented

Choice of feeding sources

Supplied with 90 cm silicone tubing, the instrument also fits optional feeding sources: ① bottle, ② vial, ③ syringe.

Great distribution flexibility

Outlet nozzle fits any Luer Lock needles and cannulas. Optional PTFE cannula provides enhanced chemical resistance. Use 4- or 8-channel manifold when dispensing into microplates.

Chemical compatibility see page 26
Needles and cannulas see page 31



Protective calibration seal sticker

Performance and ordering information - Instruments

Including: 90 cm silicone tubing, SS blunt end cannula, female Luer inlet valve cap, QC certificate and operating instructions.

| Volume | Division | Inaccuracy (E %) | | | Imprecision (CV %) | | | Cat. No. |
|---------------|----------|------------------|-----------|-----------|--------------------|-----------|-----------|----------|
| | | Min. vol. | Mid. vol. | Max. vol. | Min. vol. | Mid. vol. | Max. vol. | |
| 5 - 50 µL | 0.1 µL | <± 5.0 % | <± 3.5 % | <± 1.5 % | < 2.0 % | < 1.4 % | < 0.4 % | 865.0050 |
| 20 - 200 µL | 0.2 µL | <± 2.5 % | <± 1.8 % | <± 1.0 % | < 1.5 % | < 1.0 % | < 0.3 % | 865.0200 |
| 100 - 1000 µL | 1.0 µL | <± 1.5 % | <± 1.1 % | <± 0.6 % | < 0.6 % | < 0.4 % | < 0.2 % | 865.1000 |

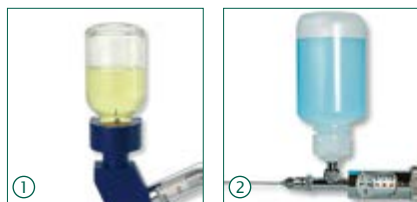
Performance values obtained with bidest. water at constant temperature (± 0.5°C) comprised between 20 and 25°C in accordance with ISO 8655. Values altered using manifold.

Ordering information - Accessories

| Description | Packaging | Cat. No. |
|---|-----------|-----------|
| Reservoir*, 30 mL, PP, Luer | 1 / pk | 1.861.631 |
| Reservoir*, 30 mL, PTFE, Luer | 1 / pk | 1.861.21T |
| Vial holder*, Luer | 1 / pk | 1.861.925 |
| Inlet valve cap*, female Luer (for syringe) | 1 / pk | 1.861.720 |
| Outlet valve cap*, Luer Lock | 1 / pk | 1.861.569 |
| PTFE delivery cannula* | 1 / pk | 1.861.E32 |
| Manifold*, 4-channel, Luer Lock, stainless steel (20mm spacing) | 1 / pk | 1.170.054 |
| Manifold*, 8-channel, Luer Lock, stainless steel (9mm spacing) | 1 / pk | 1.170.058 |
| Work station 340 for 3 pipettes | 1 / pk | 320.340 |

*Autoclavable

Accessories for self-refilling syringes



Alternative feed sources ①②

Optional vial holder conversion set and autoclavable reagent reservoirs for additional liquid feeding possibilities.

| Description | Packaging | Cat. No. |
|--|-----------|------------|
| Vial holder conversion set for 163 and 173 models (except 20 mL), without vial | 1 / pk | 1.187.1C |
| PP bottle, 60 mL | 1 / pk | 1.187.060* |
| PP bottle, 125 mL | 1 / pk | 1.187.150* |
| PP bottle, 250 mL | 1 / pk | 1.187.250* |

*Use with Rotlauf inlet valve (Cat. No. 187.613) only, to be ordered separately.



Enhanced tightness set ③

The special clear glass barrel / X-ring fitted plunger enhance tightness when demanded by application (ex. filtration, aspiration, etc.).

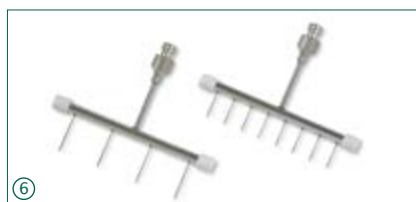
| Description | Packaging | Cat. No. |
|--|-----------|-----------|
| Set includes one each plunger, X-ring, 5 mL barrel and grease | 1 / pk | 1.170.205 |
| Spare barrel for tightness set, 5 mL | 6 / pk | 0187.05T |
| Set includes one each plunger, X-ring, 10 mL barrel and grease | 1 / pk | 1.170.210 |
| Spare barrel for tightness set, 10 mL | 1 / pk | 0187.10T |



Aspiration valve ④⑤

Reverse modus valve set for liquid aspiration (ex. waste collection in separate container). Vented waste collector cap and enhanced tightness set recommended.

| Description | Packaging | Cat. No. |
|---|-----------|-----------|
| Reverse modus aspiration valve unit for 164 / 174 models | 1 / pk | 1.170.952 |
| Screw cap ø 45 mm, with tubing connection and filtered air outlet | 1 / pk | 1.170.945 |



Multiple dispensing manifolds ⑥

For convenient distribution in 24- and 96-well plates. Tight-fitting Luer and Luer Lock syringe nozzles. Stainless steel with PTFE stoppers, autoclavable.

| Description | Packaging | Cat. No. |
|-----------------------------------|-----------|-----------|
| 4-channel manifold, 20 mm spacing | 1 / pk | 1.170.054 |
| 8-channel manifold, 9 mm spacing | 1 / pk | 1.170.058 |



Dispensing cannulas & needles ⑦

Luer Lock, stainless steel, autoclavable. Needles supplied 12 / pack.

| Size (ø x L) | Packaging | Cat. No. |
|---|-----------|------------|
| Lab cannulas, blunt end | | |
| 0.8 x 40 mm | 12 / pk | 370.0840 |
| 1.2 x 50 mm | 1 / pk | 370.1250 |
| 2.2 x 100 mm | 1 / pk | 370.22100 |
| 2.2 x 150 mm | 1 / pk | 370.22150 |
| Superior quality needles, bevelled | | |
| 1.2 x 10 mm | 1 / pk | 371.1210UN |
| 1.6 x 20 mm | 1 / pk | 371.1620UN |
| 2.0 x 30 mm | 1 / pk | 371.2030UN |
| 2.0 x 40 mm | 1 / pk | 371.2040UN |



Drenchers ⑧

For safe animal mouth and nose feeding. Stainless steel, autoclavable.

| Size (ø x L) | Packaging | Cat. No. |
|----------------------------|-----------|------------|
| Drenchers, straight | | |
| 0.9 x 25 mm | 3 / pk | 376.0925S |
| 1.2 x 51 mm | 3 / pk | 376.1251S |
| 1.6 x 102 mm | 2 / pk | 376.16102S |
| 3.0 x 203 mm | 2 / pk | 376.30203S |
| Drenchers, bent | | |
| 0.9 x 25 mm | 3 / pk | 376.0925B |
| 1.2 x 51 mm | 3 / pk | 376.1251B |
| 1.6 x 102 mm | 2 / pk | 376.16102B |
| 3.0 x 203 mm | 2 / pk | 376.30203B |

Injection needles, bevelled

| ø x L, mm | Cat. No. | ø x L, mm | Cat. No. | ø x L, mm | Cat. No. | ø x L, mm | Cat. No. |
|-----------|----------|-----------|----------|-----------|----------|-----------|-----------|
| 0.7 x 13 | 371.0713 | 1.4 x 10 | 371.1410 | 1.0 x 20 | 371.1020 | 1.6 x 100 | 371.16100 |
| 0.8 x 10 | 371.0810 | 1.4 x 20 | 371.1420 | 1.0 x 30 | 371.1030 | 1.8 x 10 | 371.1810 |
| 0.8 x 25 | 371.0825 | 1.6 x 13 | 371.1613 | 1.0 x 40 | 371.1040 | 1.8 x 20 | 371.1820 |
| 0.8 x 30 | 371.0830 | 1.6 x 20 | 371.1620 | 1.2 x 10 | 371.1210 | 2.0 x 30 | 371.2030 |
| 0.8 x 40 | 371.0840 | 1.6 x 25 | 371.1625 | 1.2 x 20 | 371.1220 | 2.0 x 40 | 371.2040 |
| 1.0 x 10 | 371.1010 | 1.6 x 30 | 371.1630 | 1.2 x 50 | 371.1250 | 2.0 x 50 | 371.2050 |

Additional sizes available