

Hand-held, self-refilling microdispenser intended for repeat distribution of microliter volumes. Carefully selected materials ensure durability and resistance to aggressive media. Instrument combines easy handling of a regular micropipette with flexibility of a repeater pipette. There is no need for plastic tips or consumables, which may represent substantial savings. Three-year warranty.

The Acura® self-refill 865

Product advantages

- Excellent ergonomics, soft plunger activation
- Large volume display
- *Swift-set* user calibration system*
- No need for consumables
- Autoclavable fully assembled at 121°C / 250°F
- Versatile feeding through bottle, tubing or syringe

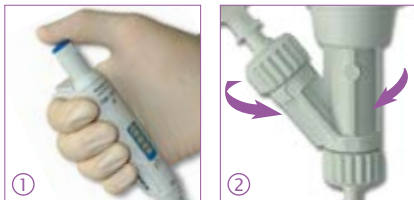
* Socorex patented

865
5 - 50 µL
20 - 200 µL
100 - 1000 µL



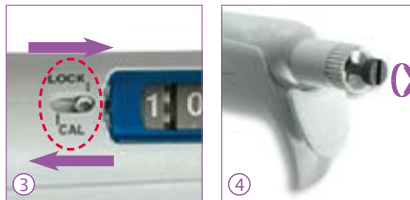
Excellent ergonomics ①

Instrument shape and lightweight offer most convenient pipetting comfort. Smooth plunger activation drastically reduces hand fatigue.



Convenient dispensing ①

Reliable valve system ensures high performance dispensing, dose after dose. It revolves to allow selection of the best working position.



Swift-set calibration system* ③ ④

Easy and precise system with integrated key and locking mechanism, making tedious procedures a thing of the past.

* Socorex patented

Choice of feeding sources

Supplied with 90 cm silicone tubing, the instrument also fits optional feeding sources: ① bottle, ② vial, ③ syringe.

Great distribution flexibility

Outlet nozzle fits any Luer Lock needles and cannulas. Optional PTFE cannula provides enhanced chemical resistance. Use 4- or 8-channel manifold when dispensing into microplates.

Chemical compatibility see page 26
Needles and cannulas see page 31



Protective calibration seal sticker

Performance and ordering information - Instruments

Including: 90 cm silicone tubing, SS blunt end cannula, female Luer inlet valve cap, QC certificate and operating instructions.

Volume	Division	Inaccuracy (E %)			Imprecision (CV %)			Cat. No.
		Min. vol.	Mid. vol.	Max. vol.	Min. vol.	Mid. vol.	Max. vol.	
5 - 50 µL	0.1 µL	<± 5.0 %	<± 3.5 %	<± 1.5 %	< 2.0 %	< 1.4 %	< 0.4 %	865.0050
20 - 200 µL	0.2 µL	<± 2.5 %	<± 1.8 %	<± 1.0 %	< 1.5 %	< 1.0 %	< 0.3 %	865.0200
100 - 1000 µL	1.0 µL	<± 1.5 %	<± 1.1 %	<± 0.6 %	< 0.6 %	< 0.4 %	< 0.2 %	865.1000

Performance values obtained with bidest. water at constant temperature (± 0.5°C) comprised between 20 and 25°C in accordance with ISO 8655. Values altered using manifold.

Ordering information - Accessories

Description	Packaging	Cat. No.
Reservoir*, 30 mL, PP, Luer	1 / pk	1.861.631
Reservoir*, 30 mL, PTFE, Luer	1 / pk	1.861.21T
Vial holder*, Luer	1 / pk	1.861.925
Inlet valve cap*, female Luer (for syringe)	1 / pk	1.861.720
Outlet valve cap*, Luer Lock	1 / pk	1.861.569
PTFE delivery cannula*	1 / pk	1.861.E32
Manifold*, 4-channel, Luer Lock, stainless steel (20mm spacing)	1 / pk	1.170.054
Manifold*, 8-channel, Luer Lock, stainless steel (9mm spacing)	1 / pk	1.170.058
Work station 340 for 3 pipettes	1 / pk	320.340

*Autoclavable