

Acura® dilute 1:10 dilution pipette

1:10 dilution pipette

Air displacement pipette with two pre-calibrated steps allows subsequent pipetting of 1 and 0.1 mL of the same liquid. Metal nozzle fits long straw tips to aspirate from narrow or deep reservoirs (i.e. Stomacher® bags). Ideal alternative to the graduated glass pipettes when performing serial 1:10 dilutions in bacteriology. Three-year warranty.

810

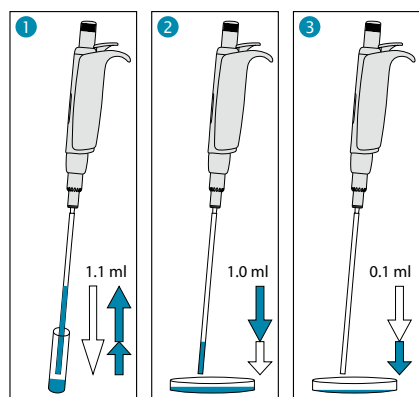
1 + 0.1 mL

The Acura® dilute 810

Product advantages

- Two pre-calibrated fixed volumes – no setting required
- Smooth activation, excellent ergonomics
- Interchangeable PE nozzle protection filter
- Justip™ system* for height adjustment of tip ejector
- Independent calibration for each volume
- Easy maintenance, cleaning and disinfection
- Fully autoclavable at 121°C / 250°F

* Socorex patented



Simple operation

- 1 Depress plunger button in full, then release slowly to aspirate 1.1 mL
- 2 Depress plunger button to first stop, thus dispensing 1 mL in Petri dish
- 3 Depress plunger button to second stop, thus dispensing residual 0.1 mL in next Petri dish



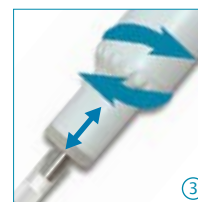
No setting required ①

Two fixed volumes within one plunger travel.



Innovative dual calibration ②

Both volumes of 1 mL and 0.1 mL can be calibrated independently from each other. Calibration switch protected by seal sticker.



Justip™ ejector ③

Turn left or right to adjust ejector to straw tip position on the nozzle.



Straw tips ④

First class polypropylene. Size 190 mm. Specially designed for narrow vials and Stomacher® bags. Large diameter (4mm) prevents blocking by particles in suspension.

Performance and ordering information - Instrument

Volume	Inaccuracy (E%)	Imprecision (CV%)	Cat. No.
1 mL	≤± 0.5 %	< 0.4 %	810.1100
0.1 mL	≤± 2.0 %	< 2.5 %	

Performance values obtained with bidest. water at constant temperature (± 0.5°C) comprised between 20 and 25°C in accordance with ISO 8655.

Ordering information - Accessories

Description	Packaging	Cat. No.
Straw tips, polypropylene, sterilized (L: 190 mm, Ø: 4 mm)	40x 25 / pk	313.1119.40
Nozzle protection filter, PE material	100 / pk	322.810
Work station 340 for 3 pipettes	1 / pk	320.340
Shelf pipette holder 332 for 2 pipettes	1 / pk	320.332
Shelf pipette holder 332 for 2 pipettes	4 / pk	320.332.4

High performance positive displacement micropipettes with interchangeable glass capillary tube and ETFE tipped plunger. The soft-shaped handle and smooth plunger activation provide for enhanced hand comfort while handling viscous liquids, foaming solutions or volatile solvents. Five models cover a range from 1 to 200 µL. Three-year warranty.



846

- 1 - 5 µL
- 5 - 25 µL
- 10 - 50 µL
- 60 - 100 µL
- 100 - 200 µL

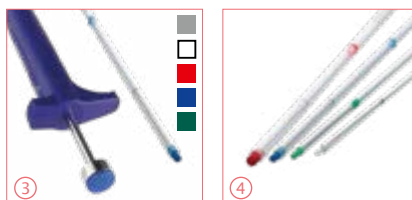
The Acura® capillar 846

Product advantages

- Slim body shape, comfortable finger rest
- Smooth plunger activation
- Reliable, step-wise volume adjustment
- Colour codes matching on pipettes, plungers and capillaries
- Stainless steel, ETFE tipped plunger

Enhanced pipetting comfort ①

Instrument slim shape fits any hand. Comfortable hook enables pipette to rest naturally on finger. Well engineered spring system reduces plunger force requirement.



Pre-set volumes ②

Each pipette has five, easy to adjust pre-set volumes. Clear volume reading on pipette barrel.

Colour coding ③

Pipette, plunger tip and glass capillary bear colour coding for easy volume identification.

ETFE tipped plunger ④

Chemically inert ETFE material offers excellent resistance when coming in direct contact with liquids.

Workstation 340 ⑤

For up to three pipettes, any Socorex models (Cat. No. 320.340).

Performance and ordering information - Instruments

Volumes	Inaccuracy (E%)			Imprecision (CV%)			Cat. No.
	Min. vol.	Mid. vol.	Max. vol.	Min. vol.	Mid. vol.	Max. vol.	
1-2-3-4-5 µL	<± 3.0 %	<± 2.3 %	<± 2.0 %	< 2.5 %	< 2.0 %	< 1.2 %	846.005
5-10-15-20-25 µL	<± 1.5 %	<± 1.2 %	<± 0.8 %	< 1.0 %	< 0.9 %	< 0.6 %	846.025
10-20-30-40-50 µL	<± 1.2 %	<± 1.0 %	<± 0.7 %	< 0.8 %	< 0.7 %	< 0.4 %	846.050
60-75-80-90-100 µL	<± 0.7 %	<± 0.7 %	<± 0.7 %	< 0.6 %	< 0.5 %	< 0.3 %	846.100
100-120-150-175-200 µL	<± 0.7 %	<± 0.7 %	<± 0.7 %	< 0.3 %	< 0.3 %	< 0.3 %	846.200

Performance values obtained with bidist. water at constant temperature (± 0.5°C) comprised between 20 and 25°C in accordance with ISO 8655. Model 846 not autoclavable.

Ordering information - Accessories

Colour code	Packaging	Cat. No.
Spare glass capillaries		
White	200 / pk	341.005
2x white	200 / pk	341.025
Green	200 / pk	341.050
Blue	200 / pk	341.100
Red	100 / pk	341.200

Colour code	Packaging	Cat. No.
Spare plungers with glass capillaries		
Steel	5 / pk	342.005
White	5 / pk	342.025
Green	5 / pk	342.050
Blue	5 / pk	342.100
Red	5 / pk	342.200

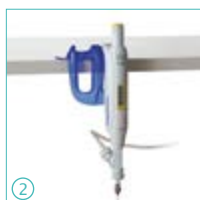
Properly storing micropipettes prevents damages and extends their life span. Socorex offers a choice of stands adapted to any laboratory configuration.

Shelf pipette holder 332

- 2 positions
- Fitting micro-, macro- and multichannel pipettes



332



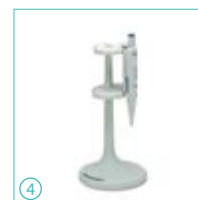
Holder for two instruments ①②

The attractive design accommodates all Calibra® and Acura® instruments, including microdispenser pipettes Acura® 865. A self-adhesive strip supplied ensures lasting attachment on any clean surface. Made of polycarbonate material.

340

Static work station 340

- 3 positions
- Fitting micro-, macro- and/or multichannel Socorex® pipettes
- Easy reach of each instrument



Ordering information

Colour	Packaging	Cat. No.
Shelf pipette holder 332		
Transparent blue	1 / pk	320.332
Transparent blue	4 / pk	320.332.4
Static work station 340		
Light grey	1 / pk	320.340

Extended compatibility ③④⑤

Work station 340 also accommodates dilution pipette Acura® 810, positive displacement pipettes Acura® 846 and microdispenser pipettes Acura® 865. Heavy-bottom plate and anti-slip pads guarantee high stability. Made of polyamide material.

Hand-held, self-refilling microdispenser intended for repeat distribution of microliter volumes. Carefully selected materials ensure durability and resistance to aggressive media. Instrument combines easy handling of a regular micropipette with flexibility of a repeater pipette. There is no need for plastic tips or consumables, which may represent substantial savings. Three-year warranty.

The Acura® self-refill 865

Product advantages

- Excellent ergonomics, soft plunger activation
- Large volume display
- Swift-set user calibration system*
- No need for consumables
- Autoclavable fully assembled at 121°C / 250°F
- Versatile feeding through bottle, tubing or syringe

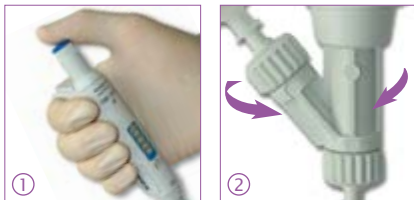
* Socorex patented

865
5 - 50 µL
20 - 200 µL
100 - 1000 µL



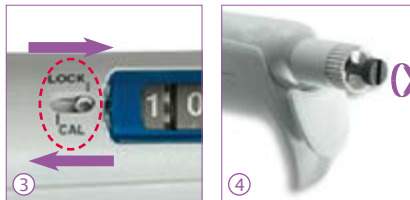
Excellent ergonomics ①

Instrument shape and lightweight offer most convenient pipetting comfort. Smooth plunger activation drastically reduces hand fatigue.



Convenient dispensing ①

Reliable valve system ensures high performance dispensing, dose after dose. It revolves to allow selection of the best working position.



Swift-set calibration system* ③ ④

Easy and precise system with integrated key and locking mechanism, making tedious procedures a thing of the past.

* Socorex patented

Choice of feeding sources

Supplied with 90 cm silicone tubing, the instrument also fits optional feeding sources: ① bottle, ② vial, ③ syringe.

Great distribution flexibility

Outlet nozzle fits any Luer Lock needles and cannulas. Optional PTFE cannula provides enhanced chemical resistance. Use 4- or 8-channel manifold when dispensing into microplates.

Chemical compatibility see page 26
Needles and cannulas see page 31



Protective calibration seal sticker

Performance and ordering information - Instruments

Including: 90 cm silicone tubing, SS blunt end cannula, female Luer inlet valve cap, QC certificate and operating instructions.

Volume	Division	Inaccuracy (E %)			Imprecision (CV %)			Cat. No.
		Min. vol.	Mid. vol.	Max. vol.	Min. vol.	Mid. vol.	Max. vol.	
5 - 50 µL	0.1 µL	<± 5.0 %	<± 3.5 %	<± 1.5 %	< 2.0 %	< 1.4 %	< 0.4 %	865.0050
20 - 200 µL	0.2 µL	<± 2.5 %	<± 1.8 %	<± 1.0 %	< 1.5 %	< 1.0 %	< 0.3 %	865.0200
100 - 1000 µL	1.0 µL	<± 1.5 %	<± 1.1 %	<± 0.6 %	< 0.6 %	< 0.4 %	< 0.2 %	865.1000

Performance values obtained with bidest. water at constant temperature (± 0.5°C) comprised between 20 and 25°C in accordance with ISO 8655. Values altered using manifold.

Ordering information - Accessories

Description	Packaging	Cat. No.
Reservoir*, 30 mL, PP, Luer	1 / pk	1.861.631
Reservoir*, 30 mL, PTFE, Luer	1 / pk	1.861.21T
Vial holder*, Luer	1 / pk	1.861.925
Inlet valve cap*, female Luer (for syringe)	1 / pk	1.861.720
Outlet valve cap*, Luer Lock	1 / pk	1.861.569
PTFE delivery cannula*	1 / pk	1.861.E32
Manifold*, 4-channel, Luer Lock, stainless steel (20mm spacing)	1 / pk	1.170.054
Manifold*, 8-channel, Luer Lock, stainless steel (9mm spacing)	1 / pk	1.170.058
Work station 340 for 3 pipettes	1 / pk	320.340

*Autoclavable

Calibrex™ universal bottle-top dispensers

Designed for performance handling of liquids from a large variety of bottles and flasks, the Calibrex™ universal dispensers combine the latest in dosing technology, high-tech materials and ergonomic design. They are manufactured and tested to fully comply with current safety regulations. Fixed versions also available in any volume within these ranges. Two-year warranty.

520

0.25 - 2 mL
1 - 5 mL
1 - 10 mL

The Calibrex™ universal 520

Product advantages

- Superior chemical resistance
- Long-lasting performance stability
- Simple construction – no tool for disassembling
- Single hand volume setting
- Calibration mechanism under the cap
- QR code accessing chemical compatibility chart
- Autoclavable at 121°C / 250°F fully assembled

Friendly digital volume setting ①②

Fast and precise volume adjustment. Efficient click-stop mechanism prevents unwanted alteration.



Large display is easy to read; the window adjusts to desired side of instrument body. Each step on the cylindrical cam is pre-calibrated and corresponds to one division on the volume adjustment scale.

Optimised working position ③

The instrument rotates 360° for adequate positioning on top of the bottle.



Air filter ④

Air inlet can be enlarged to receive a membrane filter, if airborne contamination is a concern.

In-lab calibration ⑤

Calibrex™ dispensers are factory calibrated and can be easily recalibrated by means of a dedicated adjustment screw.



Easy maintenance ⑥

Disassembling/reassembling is facilitated by the limited number of well-connected parts - no tool needed.

Superior material selection

Special attention is paid to component materials, providing for long instrument life. Parts coming in contact with the liquid flow are chemically inert.

Parts	Materials
Feed tube	PTFE
Intake valve	Ceramic
Valve balls	Pyrex glass
Valve spring	Platinum-iridium
Barrel	Borosilicate glass
Barrel plate / base	PTFE
Plunger	Glass with PFA coating
Outlet valve	Ceramic
Body	ETFE
Delivery jet assembly	PTFE/ETFE

Large selection of bottles
see page 28

Performance and ordering information

Calibrex™ universal 520 have a 32 mm base thread. They come with three adaptors: 28, 40, 45 mm and 300 mm feed tube.

Volume	Division	Inaccuracy (E %)			Imprecision (CV %)			Cat. No. Adj. volume	Cat. No. Fixed volume*
		Min.vol	Mid.vol	Max.vol	Min.vol	Mid.vol	Max.vol		
0.25 - 2 mL	0.05 mL	<± 3.0 %	<± 1.8 %	<± 0.6 %	< 0.5 %	< 0.35 %	< 0.1 %	520.002	520.F02
1 - 5 mL	0.1 mL	<± 2.0 %	<± 1.3 %	<± 0.6 %	< 0.5 %	< 0.35 %	< 0.1 %	520.005	520.F05
1 - 10 mL	0.25 mL	<± 1.5 %	<± 1.1 %	<± 0.6 %	< 0.5 %	< 0.35 %	< 0.1 %	520.010	520.F10

* Specify desired fixed volume within instrument range when ordering. Performance values obtained with bidest. water at constant temperature (± 0.5°C) comprised between 20 and 25°C in accordance with ISO 8655.