

Instruments combining high-tech materials with user-friendly ergonomics. Optimal for in- and outdoor environmental analysis, clinical chemistry and cell culture applications, they offer superior performance and make pipetting safer than ever. Three-year warranty.

The Acura® manual 835

Product advantages

- Smart and reliable volume adjustment
- Single-handed volume setting
- Interchangeable nozzle protection filter
- Justip™ adjustable tip ejector* fitting most tips
- Swift-set user calibration system*
- Shock, UV light and autoclaving resistance
- Pasteur pipette fitting 2 and 5 mL models

* Socorex patented

835
macro

0.2 - 2 mL
0.5 - 5 mL
1 - 10 mL



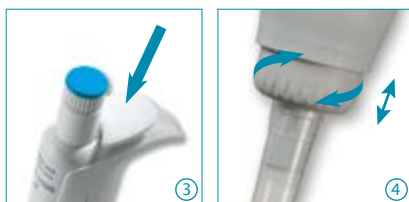
Display always visible ①

Located on the front of the instrument, the display window allows set volume to be visible at all times during pipetting. A comforting reassurance for the user.



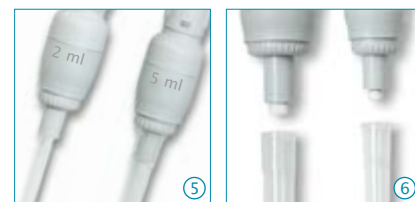
Smart and reliable volume adjustment ②

State-of-the-art micrometric volume setting is performed smoothly and precisely by turning push button. Finely machined click-stops and free rotating cap prevent any unwanted volume alteration.



Adjustable tip ejection system ③ ④

Ergonomically positioned, the large surface, soft-padded ejector provides for low-pressure activation. In addition, the shaft height adjustment system called Justip™ allows optimal distance setting between ejector and tip.



Pasteur pipette adapter ⑤

Adapter nozzles allow fitting of Pasteur pipette on Acura® manual 2 and 5 mL models in addition to polypropylene tips. The adapters have two O-rings guaranteeing proper holding and tightness of standard 2 mL Pasteur pipettes (Ø 7 mm).

Nozzle protection filter ⑥

Protection against liquid overflow and contamination.

See consumables page 42

Performance and ordering information

Volume	Division	Inaccuracy (E%)			Imprecision (CV%)			Tip style	Cat. No.
		Min. vol.	Mid. vol.	Max. vol.	Min. vol.	Mid. vol.	Max. vol.		
0.2 - 2 mL	0.002 mL	<± 1.5 %	<± 1.0 %	<± 0.5 %	< 0.5 %	< 0.3 %	< 0.2 %	2 mL	835.02
0.5 - 5 mL	0.01 mL	<± 1.5 %	<± 1.1 %	<± 0.6 %	< 0.6 %	< 0.5 %	< 0.3 %	2 mL + Pasteur	835.02PP ¹⁾
								5 mL	835.05
1 - 10 mL	0.01 mL	<± 1.5 %	<± 0.7 %	<± 0.5 %	< 0.5 %	< 0.3 %	< 0.2 %	5 mL + Pasteur	835.05PP ¹⁾
								10 mL	835.10

Performance values obtained with bidest. water at constant temperature (± 0.5°C) comprised between 20 and 25°C in accordance with ISO 8655.

¹⁾ Model includes Pasteur adapter nozzle.