

Accessories for Shaker

Universal Platform



Universal Platform

Basic accessories required to use separated funnels, erlenmeyer flask, test tube, etc.



Dual Universal Platform

Maximum sample loading possible with two-stage structure. (SKC series model exclusively)

Accessories for Universal Platform



Flask Clamp (Stainless Steel)

Equipped with Erlenmeyer flask. (50ml - 6L)
High-strength spring maintains excellent clamping.



Flask Clamp (Plastic)

Erlenmeyer flask mounting (50ml - 2L)
Reduced noise with plastic body and rubber floor.



Funnel Clamp

Separated funnel mounting (250ml - 2L)
Easy detachment and stable clamping.



Test Tube Rack

Test tube mounting (Ø8 mm - Ø35 mm)
Easily adjustable angle.



Microplate Holder

Various configurations for microplate
Single, Tower, Flat A (Large), Flat B (Small)



Lab Sticker

Excellent adhesion at 200mm x 200mm size, applied to petri dishes, culture bottles, etc.
Temp. Range (°C): 15-60 Max. Speed (rpm): 250

LC Connected



LC GreenBox

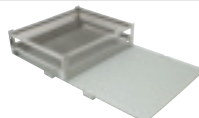
- Real-time monitoring of device operation via mobile app
- Up to 4 devices can be connected

Set Accessories



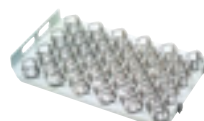
Spring Wire Rack

Fixed with 2-stage grid springs to load various sample container shapes.



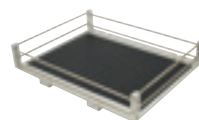
Half Spring Wire Rack

Platform that can be used both universal platform and spring wire rack at the same time.



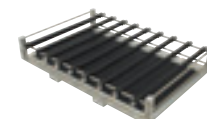
Dedicated Platform

Accessories (250 ml, 500 ml) installed on platform with maximum quantity of flask clamps.



Rubber Mat

Convenient for use with culture bottles and petri dishes with rubber plate to prevent slipping on the floor.



Universal Attachment

Floor rubber plate and adjustable clamping rod make it a convenient structure for a wide range of applications.



Microplate Tray (Dual Stacking Tray)

Dual stacking structure for microplate allows for excellent space utilization.



Microplate Tray (Large Tray)

The tray for microplates with anti-slip rubber plate on the bottom.



Stage Rack

The rack maximizes space efficiency by stacking up to four shakers.



Weight Increaser

Accessories allowing for use of SKC series shaker up to 500rpm.

Description		OS-2000	OS-3000	OS-4000	OS-7000 Series	SKC-6000 Series		SKC-7000 Series		CMS-350
Spring Wire Rack (Half)		-	-	-	-	-	-	AAA30525 ¹⁾	AAA30526 ²⁾	-
Dedicated Platforms (250 mL)		-	AAA23611-V1	AAA23621-V1	AAA23634	-	-	-	-	-
Dedicated Platforms (500 mL)		-	AAA23613-V1	AAA23622-V1	AAA23635	-	-	-	-	-
Rubber Mat		AAA3A531-V1	AAA23531-V1	AAA23532-V1	AAA23534	AAA30531	AAA30532	AAA30533 ¹⁾	AAA30534 ²⁾	AAA38501
Universal Attachment		AAA3A511-V1	AAA23511-V1	AAA23512-V1	AAA23505	AAA30511	AAA30512	AAA30513 ¹⁾	AAA30514 ²⁾	AAA3B521
Lab Sticker		AAA30551	AAA30551	AAA30551	AAA30551	AAA30551	AAA30551	AAA30551	AAA30551	AAA30551
Microplate Tray	Dual Stacking	AAA3A541	-	-	-	-	-	-	-	AAA3B531
	Large Tray	AAA3A542	-	-	-	-	-	-	-	AAA3B532
Stage Rack	4 Stages	-	AAA31541-V1	AAA31542-V1	AAA31702-V1	-	-	-	-	-
	3 Stages	-	-	-	AAA31703-V1	-	-	-	-	-
Weight Increaser		-	-	-	-	AAA30562	AAA30562	AAA30561	AAA30561	-

1) Small Size

2) Large Size