

## PARTS LIST AND ACCESSORIES

### Heating blocks

To function correctly it is important to include in the purchase the controller unit for time and temperature RAT-2, The block should not be connected directly to the mains supply.



Models	Part No.	No. of positions	Ø tube mm	Height / Width / Depth (exterior) cm	Temperature °C	Power W	Weight Kg
MACRO	4000507	6	42	18 33 28	45 to 450	1500	18
MACRO	4000508	12	42	18 39 33	45 to 450	2100	25
MACRO	4000509	20	42	18 44 39	45 to 450	2500	31
MICRO	4001050	12	26	18 33 28	45 to 450	1500	16
MICRO	4001051	24	26	18 39 33	45 to 450	2100	22
MICRO	4001052	40	26	18 44 39	45 to 450	2500	27

### Process programmer for time / temperature RAT-2. Part No. 4001538

#### Features

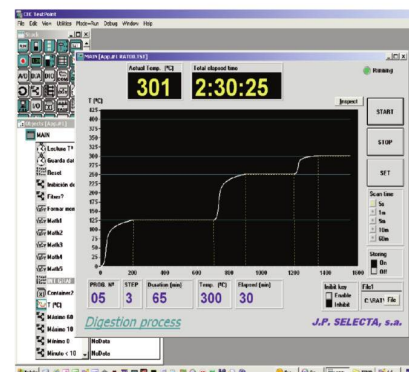
Temperature range from 45 °C to 450 °C.  
Memory for 20-4 steps programs.  
Maximum time per step: 600 minutes.  
Acoustic indication for digestion end of program.  
Two selectable temperature gradients: kjeldahl/D.Q.O.  
Temperature sense breakage alarm.  
Independent control of safety maximum temperature.  
Bidirectional RS-232 serial connection. For temperature registration and digestion program edition with the RAT connected to a PC.  
Software included.



Electronic controller RAT-2

#### Control Panel

The control panel and the RAT-2 display allow the creation and execution of the digestion program. During the digestion, it shows the block temperature, the elapsed time in the program step.



The software included makes easier the digestion program edition and the digester temperature register.

### Tube support rack.

Made of chemically treated no corrosive Dural, with handles and side panel that prevents heat loss.



### Fume extraction

Unit for collecting fumes supplied with a support rack. Made of borosilicate glass and stainless steel.



Models	Part No.	No. of places	Height / Width / Depth (exterior) cm
MACRO	4005071	6	15 17.5 12.5
MACRO	4005081	12	15 23 18
MACRO	4005091	20	15 28.5 23.5
MICRO	4001053	12	15 17.5 12.5
MICRO	4001054	24	15 23 18
MICRO	4001055	40	15 28.5 23.5

Models	Part No.	No. of places	Height / Width / Depth (exterior) cm
MACRO	4005072	6	15 18 12
MACRO	4005082	12	15 23 18
MACRO	4005092	20	15 29 23
MICRO	4001056	12	15 18 12
MICRO	4001057	24	15 23 18
MICRO	4001058	40	15 29 23



**Digestion and distillation tube** Series MACRO of 250 ml volume. Graduated to 100 ml 42 mm Ø x 300 mm high. Part No. 4042300



**Tube for digestion and distillation** Series MICRO of 100 ml volume. 26 mm Ø x 300 mm high. Part No. 4001045



**Water jet pump for vacuum extraction.** Made of PVC designed for the fume extraction of the 20 and 40 place models. Part No. 4000633



**Water Jet pump for vacuum extraction.** Metallic, suitable for the extraction of fumes for the 6, 12 and 24 place models. Part No. 7000293