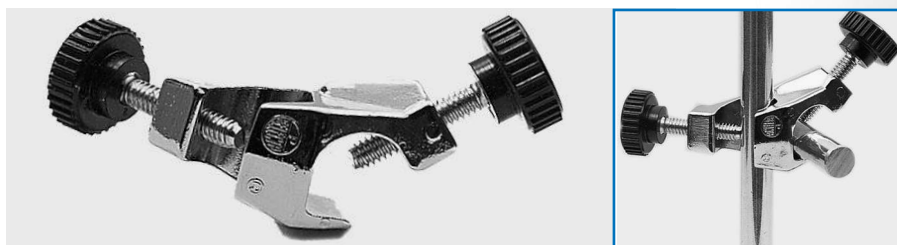




Clamps and Stands

CLAMPS MADE OF LIGHT WEIGHT "DURAL CROM" ALLOY EXTRAORDINARILY STRONG.
TONGS MADE OF AISI 304 STAINLESS STEEL.
RETORT STANDS - LABORATORY JACKS AND SCAFFOLDING.



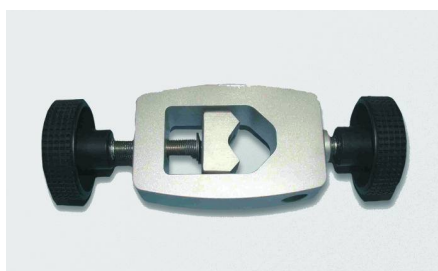
BOSSHEAD

Chrome plated. For \varnothing from 5 to 17 mm.
Part No. **100069**



BOSSHEAD "MINI"

Chrome plated. For \varnothing from 5 to 12 mm.
Part No. **1001460**



BOSSHEAD XL

Maximum opening. For rods 13 to 32 mm \varnothing .
Part No. **5057022**



BOSSHEAD "SUNTECH"

For retort bars of 5 to 22 mm \varnothing .
With screw clamp joints. Ideal for supporting overhead stirrers.
Part No. **5900600**



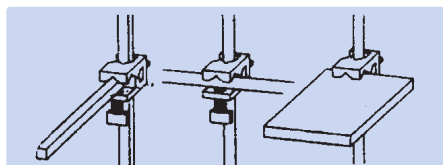
BOSSHEAD "MAXIM"

For large diameters.
Chrome plated with one opening to hold rods up to 30 mm \varnothing . Second opening up to 20 mm \varnothing .
Part No. **7000408**



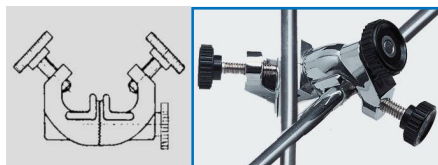
BOSSHEAD "MEDI"

For \varnothing from 5 to 20 mm.
Part No. **1001461** Chrome plated.
Part No. **1001462** Anodised black.



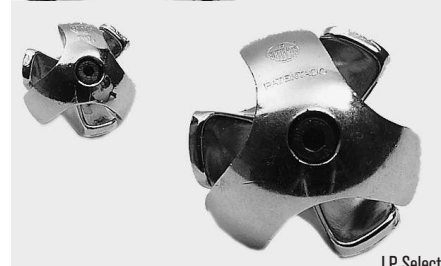
BOSSHEAD "PASS"

Original Phywe.
For joining and clamping multipurpose, round or rectangular rods up to 12 mm across.
For cross T and parallel arrangements.
Part No. **7204055**



BOSSHEAD "GIROFIX"

Conforms to DIN standard 12895-E16.
Chrome plated with swivel toothed clamp for holding rods at any angle. For rod \varnothing from 5 to 15mm.
Part No. **7000531**



ORIGINAL BOSSHEAD "TREVINGE"

Made of chrome plated "Dural" alloy.
Due to its strength, it is suitable for multilevel and three dimension constructions.
Part No. **7008133** For \varnothing of 9 to 13 mm.
Part No. **7008253** For \varnothing of 19 to 25 mm.

J.P. Selecta