

LuBj

## TECHNICAL SPECIFICATION

Limit of Detection	3.0 x 10 <sup>-21</sup> moles of Luciferase 1.0 x 10 <sup>-18</sup> moles of ATP
Linear Dynamic Range	> 1.0 x 10 <sup>7</sup>
Crosstalk (white microplate)	< 3.0 x 10 <sup>-5</sup>
Detector	Photomultiplier Tube (PMT)
Spectral Response Range	350 - 650nm
Peak Wavelength	420nm
Injectors	Up to 2 (optional)
Injection Volume	25 - 1000µl
Injector Precision	CV < 1%
Injection Increment	1µl
Connection Method	USB
Power	AC 85 - 264V / 0.5A / 150W
Dimension	L544mm x W561mm x H275mm
Weight	28.6kg
Operating Temperature	15 - 40°C
Warranty	1 Year

# LuBj

## Microplate Luminometer



### MODELS

Sample Capacity	Cat. No.	No. of Injectors
Multiplate (6, 12, 24, 48, 96)	MD-3-40-LUBM-101	0
	MD-3-40-LUBM-201	1
	MD-3-40-LUBM-301	2



**MicroDigital Co., Ltd.**

WINS-7th floor, 15, Pangyo-ro 228beon-gil,  
Bundang-gu, Seongnam-si, Gyeonggi-do,  
13487, Rep of KOREA.  
Tel: +82 31 701 2225 Fax: +82 31 702 2225  
<http://www.md-best.com>

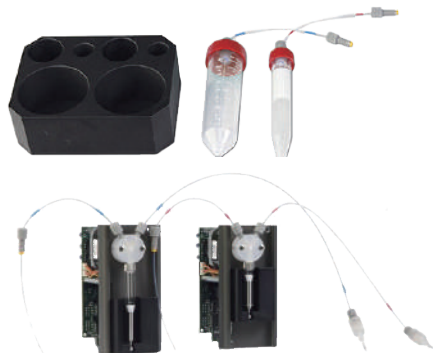


**MicroDigital Co., Ltd.**

# LuBj Microplate Luminometer

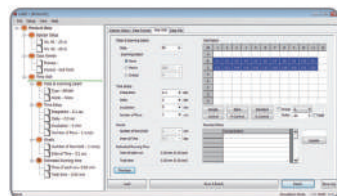
## Smart Measurement

- **Precise Measurement**  
Quick, Reliable and Precise  
Accurate Data Collection
- **Superior Sensitivity**  
Photon-counting Photomultiplier Tube (PMT)  
and Noise Reduction Circuitry using  
MicroDigital's own PhotoFlat™ detects and  
distinguishes infinitesimal amount of light



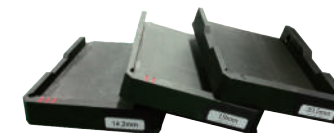
## Simple Usage

- **Minimal Maintenance & Simple Operation**  
Accessible and visible injectors allow  
convenient maintenance and cleaning
- **Intuitive & Flexible Interface**
  - Customizable protocol and detection modes
  - Excel-based data recording and exporting



## Superb Accessibility

- **Unrestricted Plate Selection**  
Analyze using any commercially  
available microplates
- **Superior Sensitivity**
  - Kinetic and End-point detection for  
your application
  - Various formats of matrix scanning  
from single center-point to orbital with  
varying diameters



## Possible Areas of Application

Reporter gene analysis  
Cell proliferation & cytotoxicity  
Apoptosis assays  
ATP assays  
Aequorin-based assays  
Cellular luminescence  
Environmental toxicity

## Sensible Application

- **System-Integrated Assays**
  - Efficiently designed waste-free reagent bottles
  - User-designed protocol
- **Internal Auto-Injection System (optional)**  
High quality syringe-type injector pumps show  
excellent reliability for any levels of throughput