

ADAP Software represents a unique and modern interface for the PC control of all Anthos reader models. Flexible function-levels of ADAP allow test programming and data evaluation protocols from routine to more complex scientific research demands.

ADAP Software

ADAP Basic

Dependent on available measurement modes ADAP Basic provides the following features:

User Administration:

- ADAP Basic provides access control by user name and password for 3 different authorization levels. This gives the user the opportunity to work within FDA 21 CFR, part 11 compliance.

Quick and easy Assay Setup:

- The basic module is an efficient tool for obtaining raw data for all measurement modes including endpoint, kinetic, spectral scan and position scan.

Data Storage and Data Export:

- All data can be stored to a database or as a text file. "Easy copy and paste" transfer of data to Excel.

Kinetic Data Reduction:

- The user can choose between various kinetic data reduction modes for assays.

ADAP Plus

This software extension of ADAP Basic is the recommended package for routine absorbance and luminescence applications such as ELISA and LIA and includes:

Quantitation of Samples:

- Samples of unknown concentrations can be quantified by use of a standard curve.

Curve Fits:

- Linear regression, point to point, cubic spline and 4 parameter fit; linear and logarithmic axis scaling as well as extrapolation options.

Qualitative Analysis:

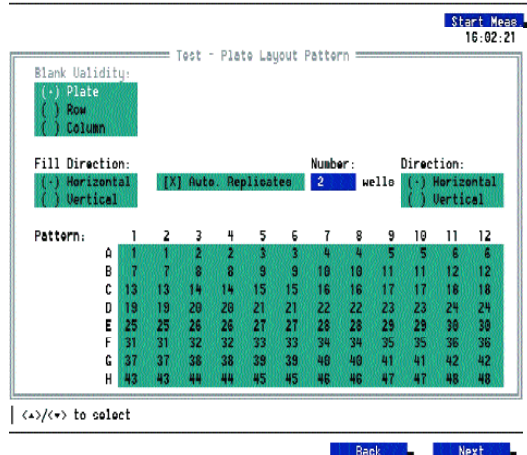
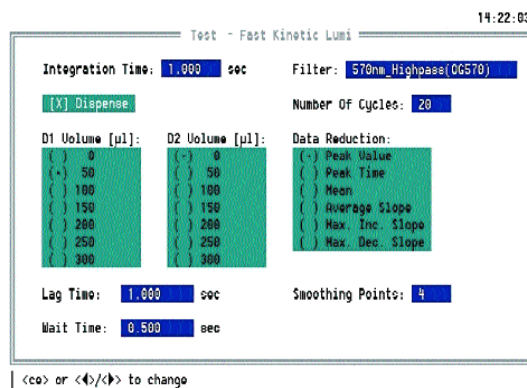
- Up to 4 different cut off values can be used to define 5 different groups of samples.

Replicate Elimination:

- Eliminates outliers and helps to avoid pipetting errors.

Assay Validation:

- Assay conditions can be established to verify test chemistry.



ADAP Expert

This software is an extension of ADAP Plus and offers kinetic evaluation and position scanning properties combined with visualisation of data.

Intra-Plate Multi Assay:

- 6 different assays can be combined on one plate.

Area and Linear Scan:

- Linear scan is used to verify agglutination.
- Area scan can be used to perform precipitation/insolubility studies.

Kinetic Evaluation:

- Reduced data from kinetic assays can be taken for further calculation and verification of test chemistry.



ADAP Prisma

ADAP Prisma is specifically designed for operation with the Anthos Zenyth 200 Spectrophotometer which uses a monochromator for wavelength selection.

ADAP Prisma includes two modules -

- The Quantitation and Characterisation module and the ELISA module.

Quantitation and Characterization Module:

- Easy to use test editor for assay development
- Quantitation of samples of unknown concentration
- Spectral scanning with post-run manipulations of spectra (overlay of different spectra)
- Calculation with factors and constants
- Position scan and well scan editor
- Multi-wavelength equation

Stored routines for most common Cuvette Assays:

- Nucleic acid concentration
- Oligo concentration, melting point and conversion to pmol/ μ l
- Direct protein quantitation at 280nm
- Determination of purity of DNA preparations
- Monitoring bacterial growth with preset or user defined conversion factors

ELISA module:

- Quantitation of samples
- Qualitative analysis
- Replicate elimination
- Assay validation
- Kinetic evaluation

ADAP Basic is supplied free of charge with all readers and provides all the necessary functions for control and data acquisition.

One upgrade level for Zenyth 200 (ADAP Prisma) and 2 upgrade levels for all other reader models (ADAP Plus and ADAP Expert) including data evaluation functions are available as options.

ORDERING INFORMATION:

ADAP Basic Software	S Disk A41	ADAP Plus Software	S Disk A42
ADAP Expert Software	S Disk A43	ADAP Prisma Software	S Disk A45



Rose Scientific Ltd
enhancing the sciences

4027 - 97 Street Telephone: (800) 661-9289
Edmonton, Alberta Fax: (800) 570-6067
Canada, T6E 5Y5 Email: sales@rosesci.com
Web: www.rosesci.com



Nordstrasse 4 A5301 Eugendorf, Austria T: (43) 6225 – 3241 F: (43) 6225 - 2549
E: anthos-sales@asyshitech.com www.anthos-labtec.com